



# 250 Watt FM RF Amplifier

FMAMP250



## Features

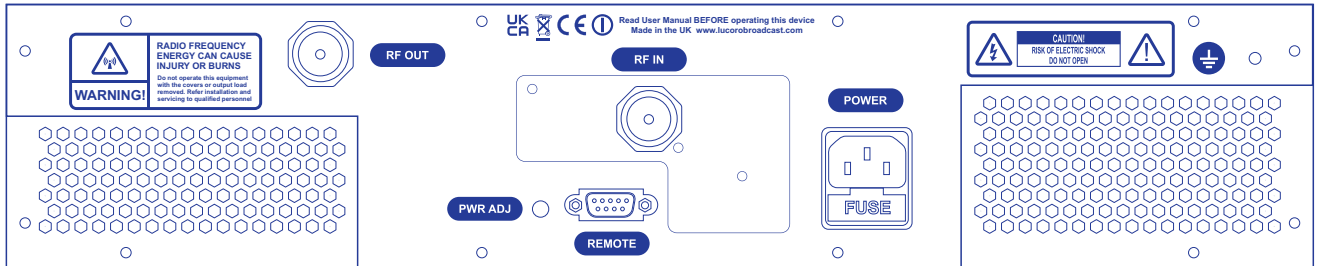
- 250W RF output power
- Very high gain
- Latest enhancement mode FET RF device
- Good efficiency
- Reliable operation

## Applications

- Power increase for very low power exciters
- Independent radio service
- Community radio service
- Reserve back-up

The FMAMP250 is a 250W RF Amplifier for FM broadcast systems. Easy to install, it represents unrivalled performance and reliable at such a low cost. Metering of systems status, plus forward and reflected power levels is provided on the front panel.

A TTL control input and status output connector on the rear panel allows easy integration into new or existing remote monitoring or control systems, plus automatic switching in back-up systems. Filtering ensures compliance with broadcast regulations.



## Specifications

Dimensions:	2U 88 H x 482 W x 350 D (mm)	Frequency:	87.5 - 108MHz
Weight:	5.0kg	Output Power:	30 - 250W
RF input:	N female 50ohm	Harmonics & spurious:	-75dBc typical
RF output:	N female 50ohm	Voltage:	100 - 250Vac 50-60Hz
Monitor / Control:	9-way D-sub female	Compliance:	EN302018, EN301489

## Lucoro Broadcast

[www.lucorobroadcast.com](http://www.lucorobroadcast.com) [sales@lucorobroadcast.com](mailto:sales@lucorobroadcast.com)

Lucoro Ltd, Clay Pit lane, Bar lane Industrial Estate, Rocliffe, York, YO51 9FS United Kingdom

We reserve the right to alter specifications without notice. E&OE. Photographs and illustrations are for guidance only and do not form a contract.

lucorobroadcast.com