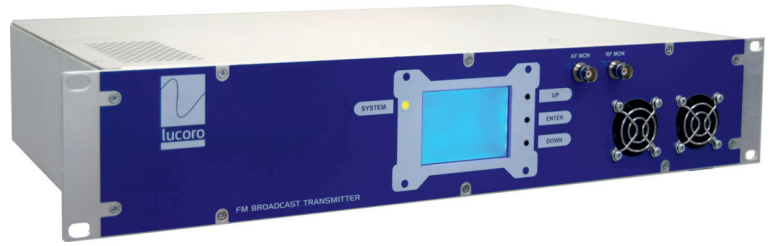




# FM Broadcast Exciter / Transmitters

## FMTX-series



### Features

- Adjustable RF output power
- Stereo DSP audio processor with RDS option
- TCP/IP control and monitoring
- Latest enhancement mode FET RF amplifier
- Temperature controlled fans with 8-year rated life

### Applications

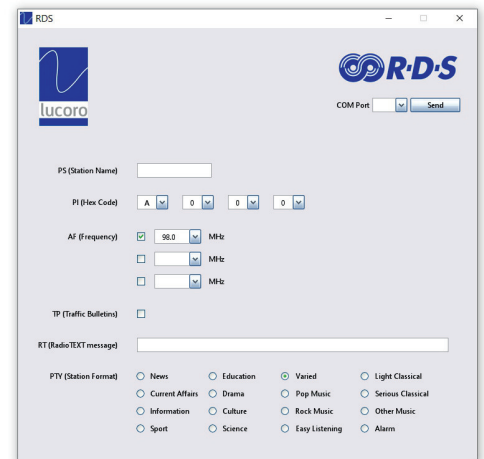
- Standalone FM Transmitter or Exciter
- Full chain reserve back-up
- Independent radio service
- Community radio service
- Special event and emergency stations

The FMTX-series is available as a fully integrated Stereo FM broadcast system (models with DSP audio processing, stereo encoder and RDS generator) in a single, highly compact product. The result is a complete transmission system for cost conscious radio stations who demand uncompromising performance.

The audio processor provides slow gain control, split-band compression, plus composite clipping and digital FIR 15kHz filtering. Three presets are available to suit a full range of programme formats.

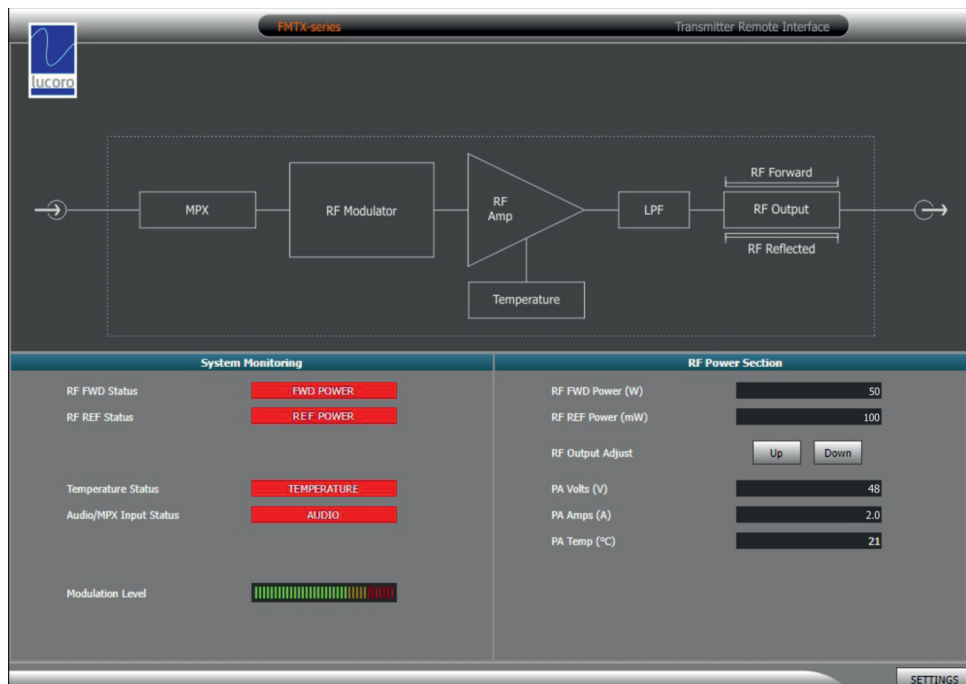
The internal RDS encoder can operate without the need for a data feed to the transmission site. The content can be updated by the user at any time, via the FMTX100's USB port from a Windows™ PC or Laptop. Dynamic RadioTEXT updates, if desired, can also be implemented via RS-232.

Multiplex input-only versions are available, as well AES/EBU digital audio input versions and Rebroadcast Relay (Transposer) options (50W and 100W models).



A network (TCP/IP Ethernet) connection is also provided, to enable remote web page monitoring and control from anywhere in

the world. It includes a mirror of the Status outputs, Forward and Reflected output power readings, plus power amplifier statistics, including PA volts, current and temperature. A modulation LED-style bargraph display also provides confidence that audio is being played. It is also possible to adjust the RF output power level via the web interface.

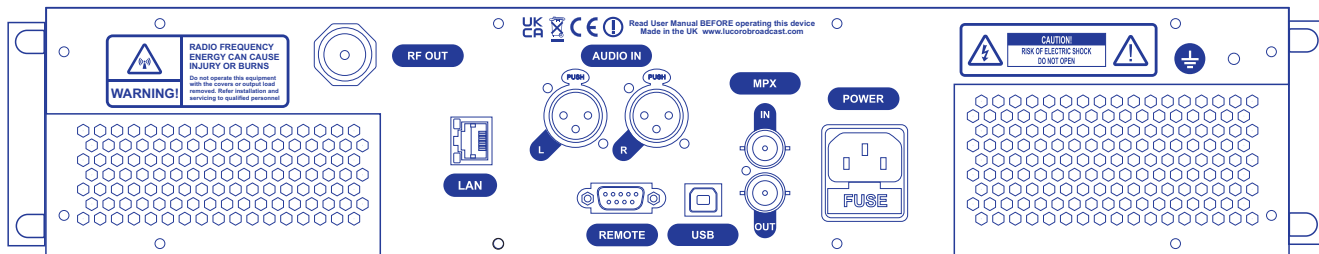


The FMTX-series of transmitters also feature temperature controlled

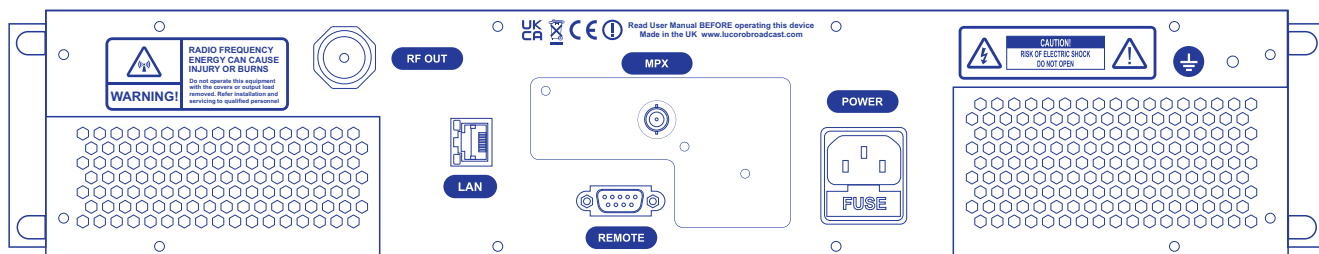
ceramic bearing fans with a manufacturer's eight year rated fan life (in ideal environmental conditions) and components are carefully specified to give a long service life.

The FMTX Series is available in 50, 125, 250 and 300W versions, and provide a reliable and rugged solution for cost-conscious stations and network providers who demand professional performance. Compliant with both CE and UKCA standards, plus broadcast regulatory compliance, the FMTX-series is fast becoming the choice of transmission systems for broadcasters around the globe.

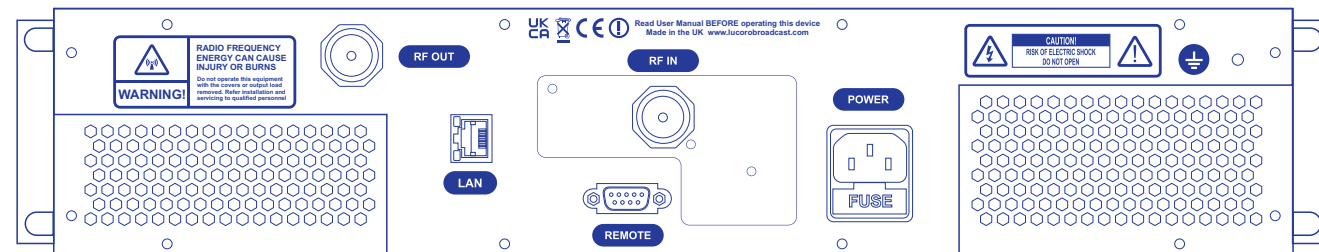
Rear panel - FMTX50, FMTX100, FMTX250, FMTX300 (audio inputs are XLR AES/EBU and SPDIF on digital audio version)



Rear panel - FMTX50M, FMTX100M, FMTX250M, FMTX300M



Rear panel - FMTX50RBRX, FMTX100RBRX



## Specifications

Dimensions:	2U 88 H x 482 W x 350 D (mm)	Harmonics & spurious:	-75dBc typical
Weight:	5.0kg (approx)	Voltage:	100 - 250Vac 50-60Hz
Audio input:	XLR 600ohm +6dBu	Compliance:	EN302018, EN301489
MPX input	BNC	AES/EBU models:	XLR AES/EBU and SPDIF inputs
MPX output	BNC	M suffix models:	BNC baseband input only
RF output:	N female 50ohm	RBRX suffix models:	N-type RF input
I/O Control:	9-way D-sub female		87.5-108MHz PLL receiver
Frequency:	87.5 - 108MHz		
Frequency range:	87.5-108MHz (100kHz Steps)		
RF output power:	50, 125, 250, 300W available		

## Lucoro Broadcast

www.lucorobroadcast.com sales@lucorobroadcast.com

Lucoro Ltd, Clay Pit lane, Bar lane Industrial Estate, Roecliffe, York, YO51 9FS United Kingdom

We reserve the right to alter specifications without notice. E&OE. Photographs and illustrations are for guidance only and do not form a contract.